



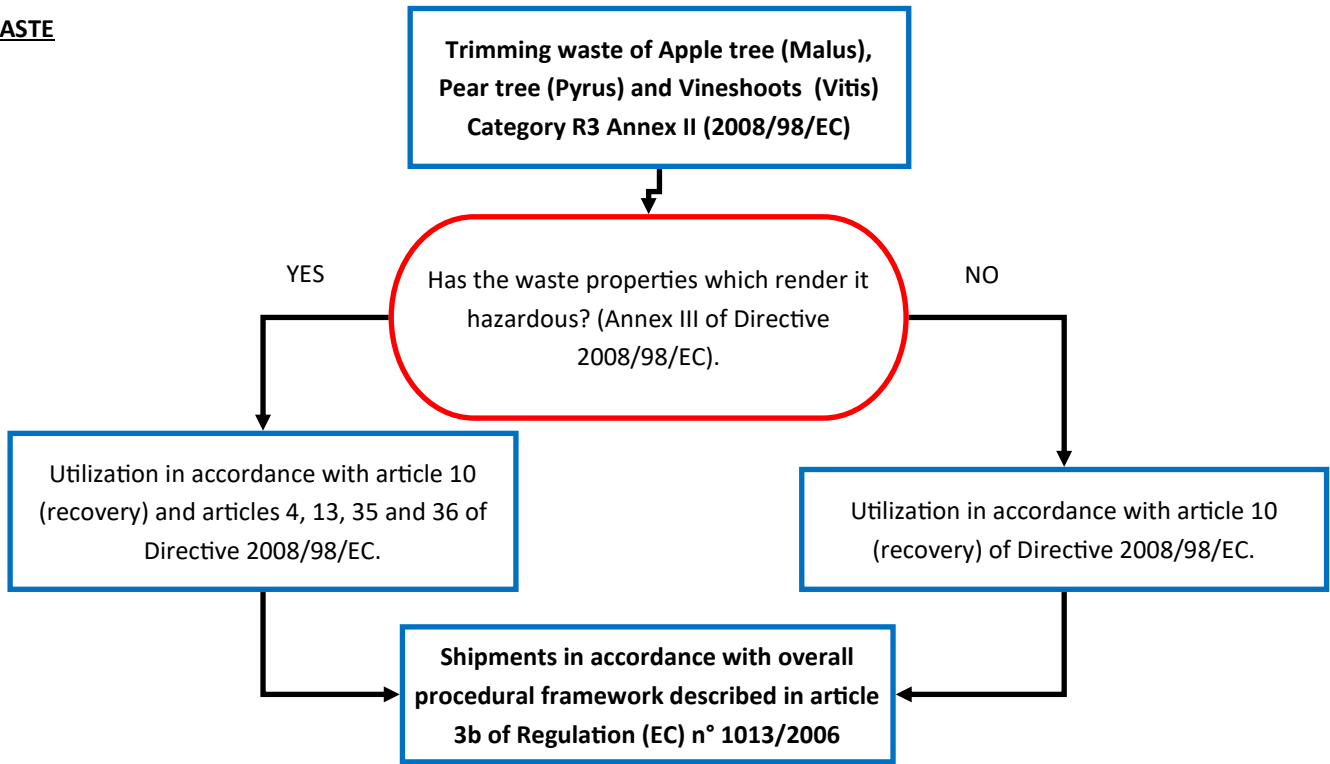
AgriWasteValue

DELIVERABLE LT4.1.

FLOWCHART "OVERVIEW OF ALL CONCERNED REGULATION AND NORMS FOR MARKET APPLICATION"

Disclaimer : This document has been written within the framework of the Interreg NWE AgriWasteValue project. This project aims to integrate trimming residues (buds, bark, stems, leaves) of fruit trees (apple tree, pear tree, grapevine) by using innovative methods to identify valuable ingredients and environmentally-friendly extraction and modification processes, which are easily scalable and interesting for the cosmetic and nutraceutical sector. The flow charts are based on the European legislation on the 21th of April, 2021, for this two sectors as well as the preliminary process to the extraction of bioactives on this type of resources. The method of reasoning is similar for other resources but may be not exhaustive if applied to the use of resources that are different than those concerned by the AgriWasteValue project.

WASTE

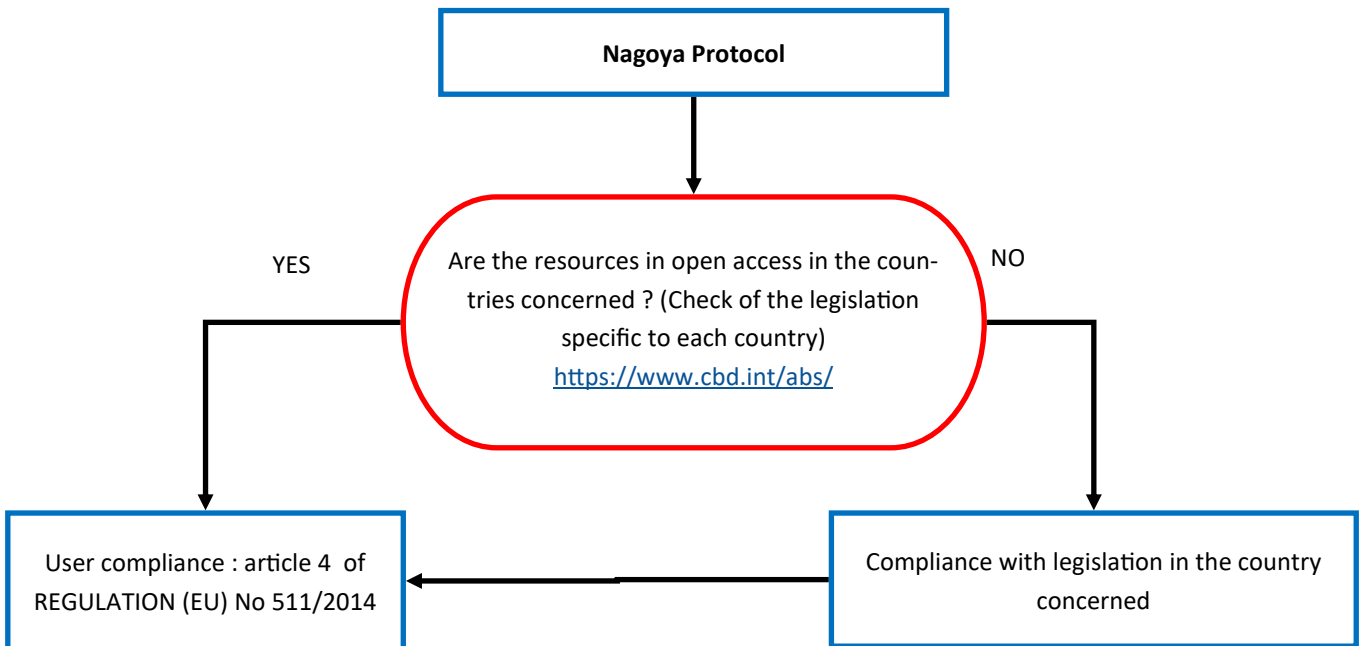


Sources :

1013/2006 : <http://data.europa.eu/eli/reg/2006/1013/oj>

2008/08/EC : <http://data.europa.eu/eli/dir/2008/98/2018-07-05>

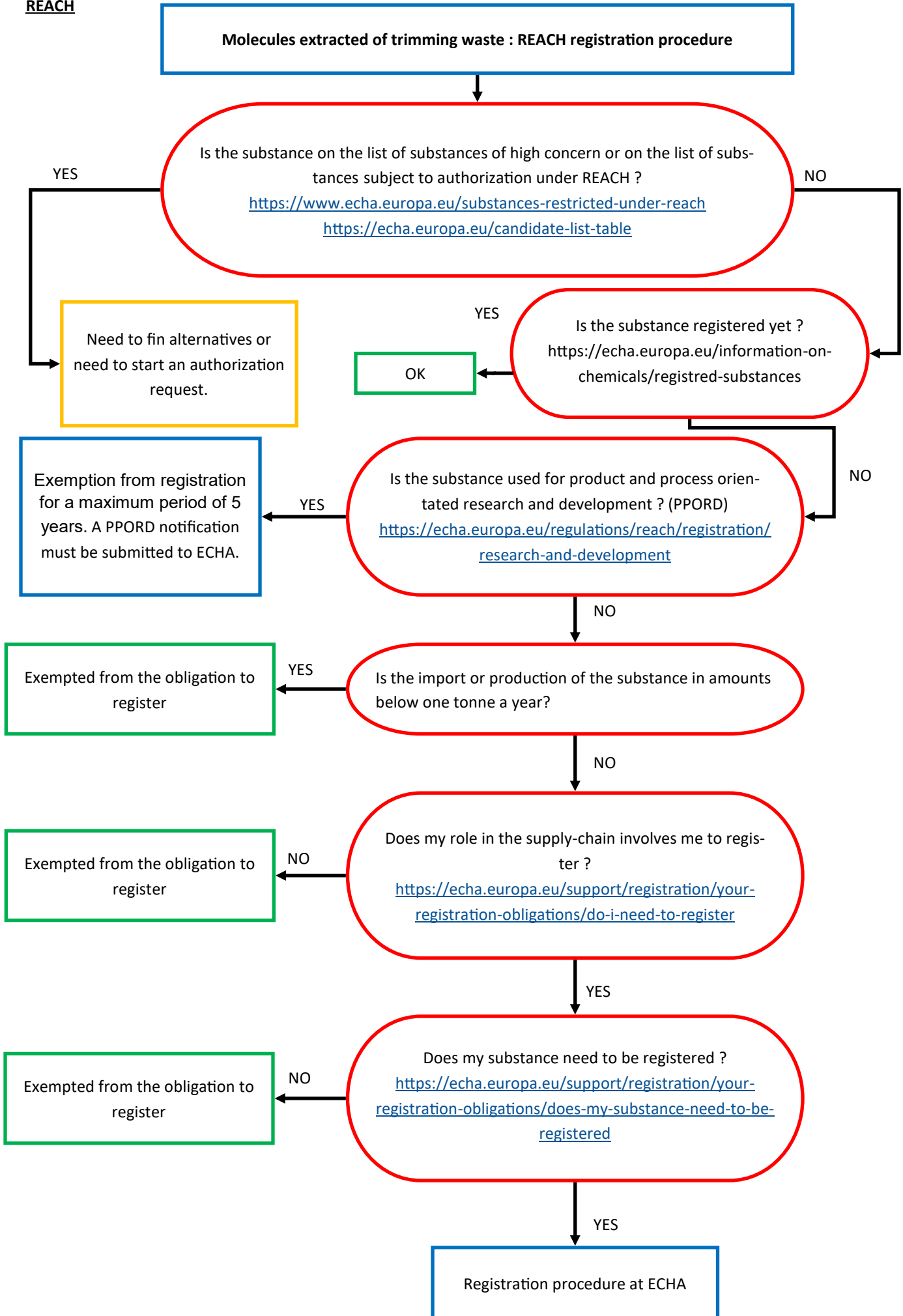
NAGOYA



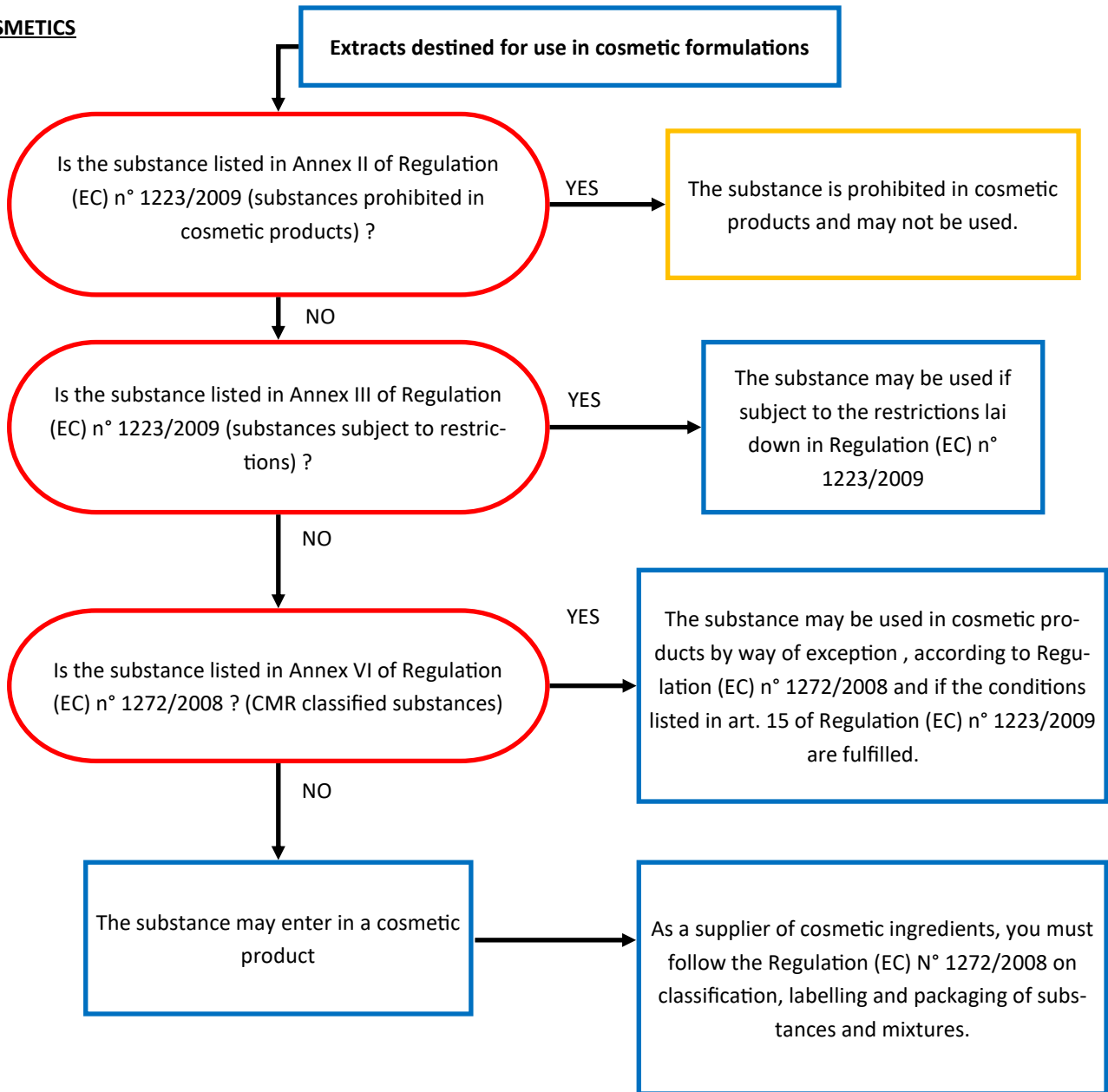
Source :

511/2014 : <http://data.europa.eu/eli/reg/2014/511/oj>

REACH



COSMETICS

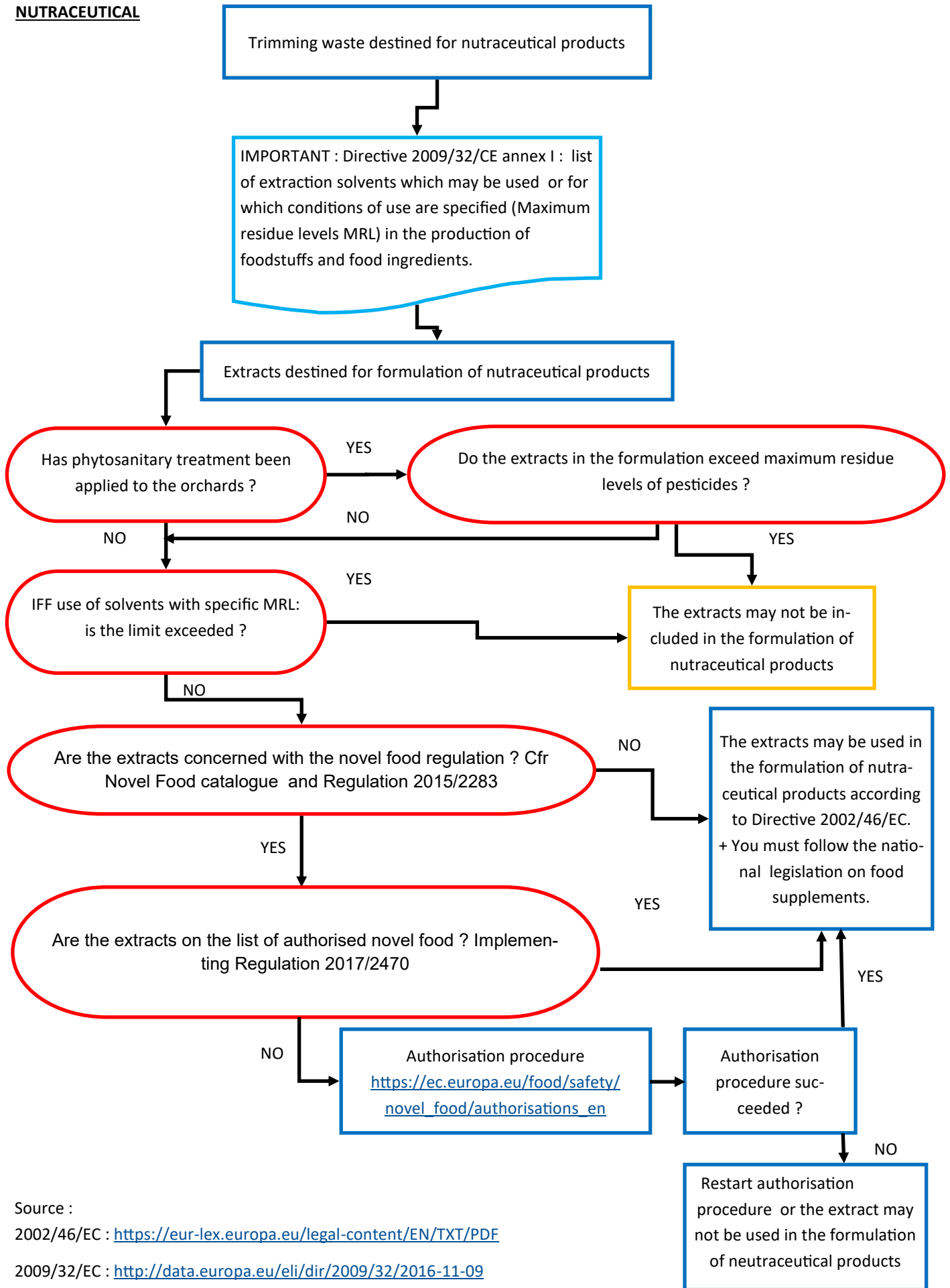


Source :

1223/2009 : <http://data.europa.eu/eli/reg/2009/1223/oj>

1272/2008 : <http://data.europa.eu/eli/reg/2008/1272/oj>

NUTRACEUTICAL



Source :

2002/46/EC : <https://eur-lex.europa.eu/legal-content/EN/TXT/PDF>

2009/32/EC : <http://data.europa.eu/eli/dir/2009/32/2016-11-09>

2017/2470 : http://data.europa.eu/eli/reg_impl/2017/2470/oj

2283/2015 (Novelfood) : <http://data.europa.eu/eli/reg/2015/2283/oj>

https://ec.europa.eu/food/safety/novel_food/catalogue/search/public/index.cfm

Project under the program



With the financial support of the European Regional Development Fund and Wallonia



9 partners in Europe

